



## SRU pump – a proven curd transfer solution

Agropur Cooperative, Little Chute, Wisconsin

Case story



Backed by documented customer test results from Agropur in Wisconsin, the SRU provides a 20% reduction in curd fines along with higher flow rates – resulting in quicker vat turnover and ultimately more cheese produced

Founded in 1938, Agropur Cooperative is a leader in the North American dairy industry, with sales of 3.4 billion dollars. Their Little Chute, Wisconsin facility produces award winning cheese and whey products – drawing from a rich Wisconsin cheese making tradition. They consider the curd transfer pump a critical cheese making step – which must move the curd gently in order to minimize the cheese fines or waste created during vat transfer. To summarize the Agropur cheese making process, they transfer cheese curd from processing vats to drain tables – where the curd is then made into mozzarella cheese.

### Putting SRU to the test

The customer was interested in a new pump because their existing PR pump is no longer manufactured. Prior to selecting a new curd transfer pump, Agropur established stringent testing criteria. Agropur measured cheese fines before the inlet of the existing PR300 pump as well as three periodic intervals at the tables. The fines levels measured at the three periodic test points were then averaged and compared to the fines content before the pump.

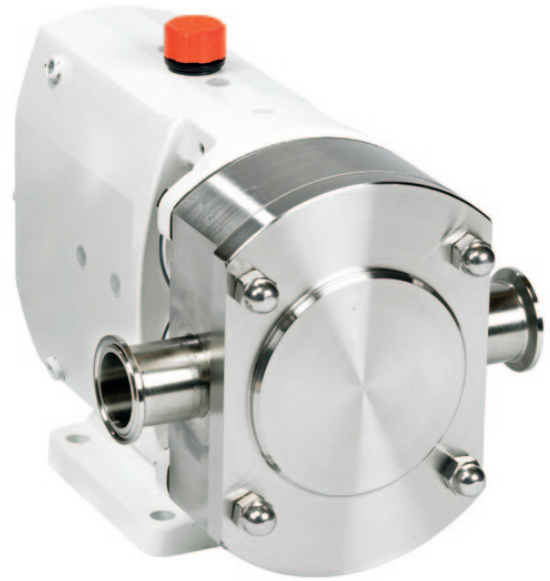
An Alfa Laval SRU6-WLD with Bi-Lobe, no galling rotors was set up in the exact same testing criteria. The pump was installed with a higher speed motor to provide a faster flow,

but it was also controlled via a variable frequency drive to provide the same flow rate as the PR300. After the SRU6 was installed, the pump ran for three weeks and the above testing was repeated.

### The results

The SRU6 test results were overwhelmingly successful – proven by a significant, 20% reduction in curd fine levels. The SRU is also a CIP pump, which reduces overall cleaning time as well as potential pump damage which can occur during manual cleaning. The SRU6-WLD pump also runs at higher flow rates while reducing fines levels. These higher flow rates also result in quicker tank turnover – allowing for the production of more vats of cheese.

After testing two additional competitors' pumps, an Alfa Laval SRU6-WLD pump was purchased because it provided the lowest fines compared to all pumps tested.



After testing two additional competitors' pumps, an Alfa Laval SRU6-WLD pump was purchased because it provided the lowest fines compared to all pumps tested.

### The SRU advantage

The SRU is Alfa Laval's core positive pump with extensive options, materials and ability to handle a wide range of temperatures and pressures. This makes it the ideal solution for the most demanding of applications.

#### Benefits:

- Robust heavy-duty construction
- Multiple specification options
- Highly simplified maintenance
- Gentle product treatment

ESE02413EN 1303

### How to contact Alfa Laval

Contact details for all countries are continually updated on our website. Please visit [www.alfalaval.com](http://www.alfalaval.com) to access the information direct.